

Physical Characteristics

Weight:	8.5 lbs	3.9 kg
Leakage to Ground:	15.3 in	389 mm
Fuse Length:	11.3 in	287 mm

Rating

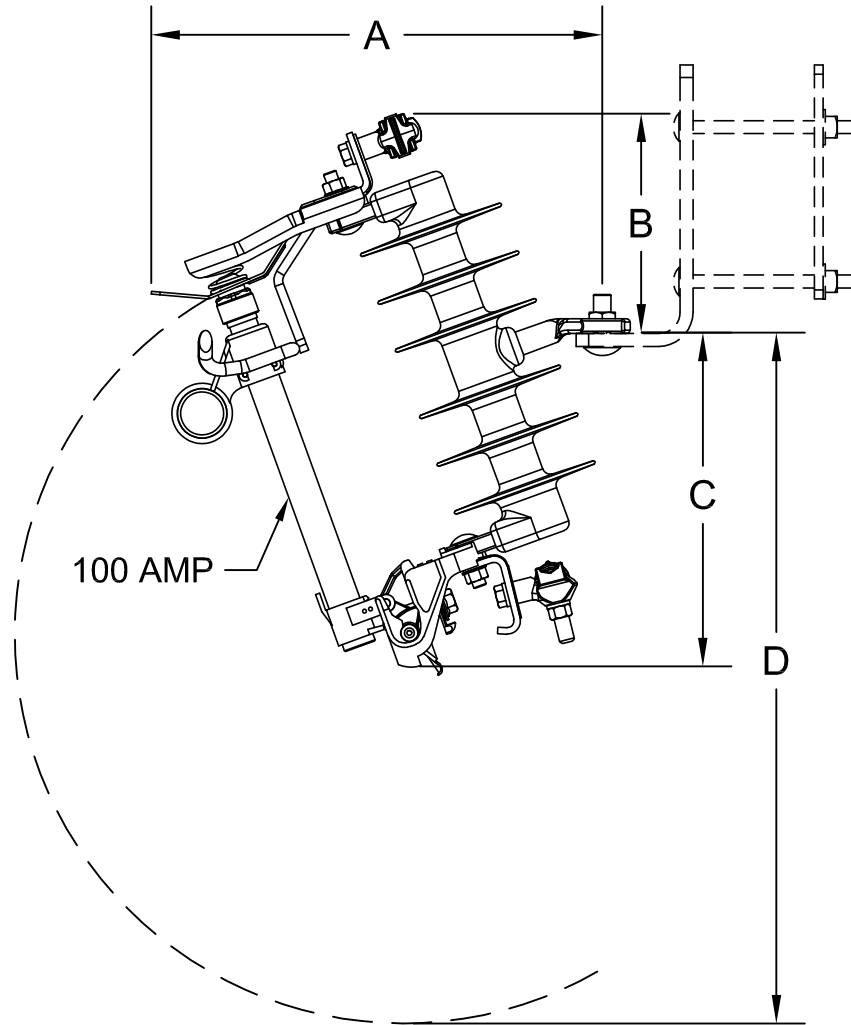
Nominal kV:	14.4 kV
Maximum kV:	15.0 kV
BIL:	110 kV
Continuous Current:	100 amp
Interrupting/Momentary:	10,000 amp

Dimensions

Dimension A:	12.5 in	318 mm
Dimension B:	6.3 in	160 mm
Dimension C:	9.8 in	249 mm
Dimension D:	20.3 in	516 mm

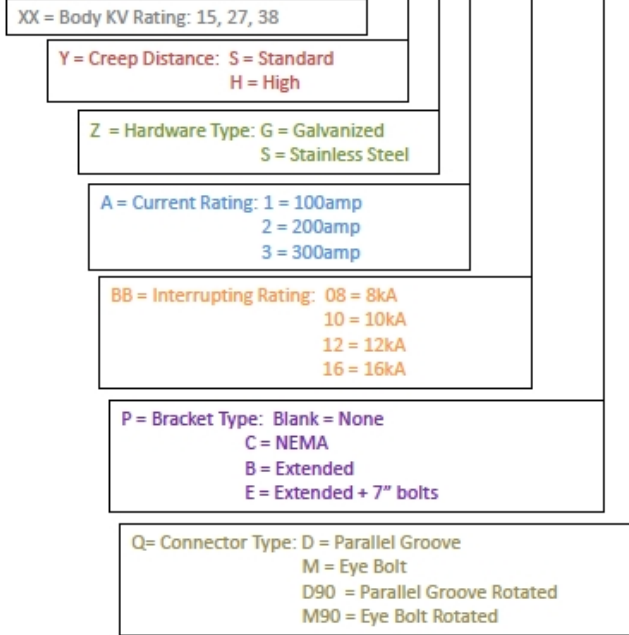
Replacement Parts

Replacement Tube:	89521R10
Cutout Less Fuse Tube:	SC15HG-M
Connector Type:	Eye Bolt
Bracket Type:	None



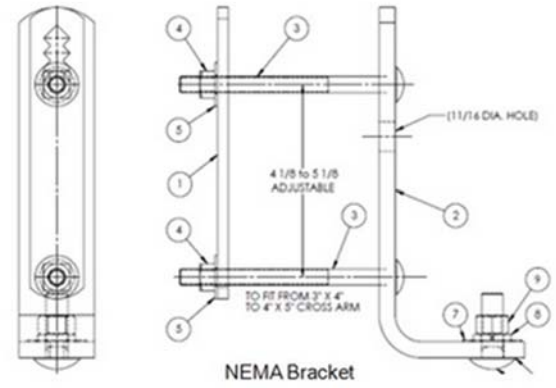
Part Numbering Convention:

SCXXYZABB-PQ



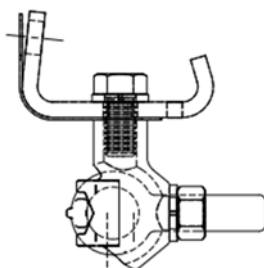
Brackets

Type:	Description:	Order Suffix:
NEMA	Fits 3" x 4" to 4"x 5" Cross Arms	-C
Extended	Extended 5.5" bracket	-B
Extended	Extended 5.5" bracket + 7" Bolts	-E

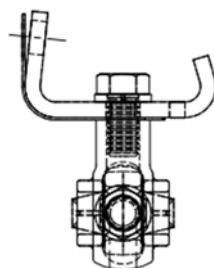


Connectors

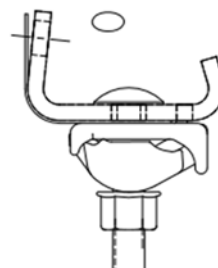
Type:	Description:	Order Suffix:
Parallel Groove Clamp	#8 Solid through 4/O	D
"	Rotated 90 Degrees	D90
Eyebolt	#6 Solid through 250MCM	M
"	Rotated 90 Degrees	M90



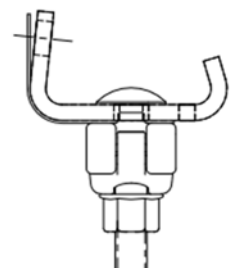
Eyebolt



Eyebolt Rotated 90 Deg. for Vertical Insertion



Parallel Groove Clamp



Parallel Groove Clamp Rotated 90° for Vertical Insertion